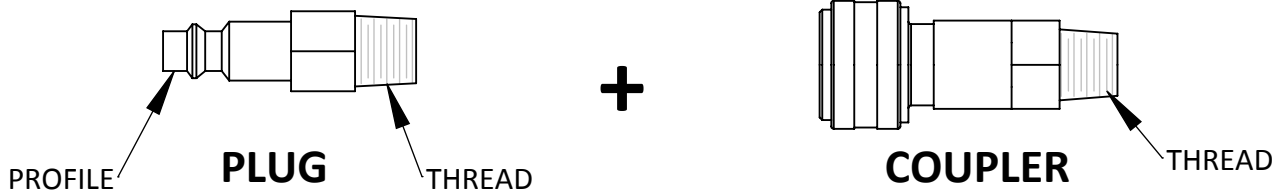


QUICK COUPLER IDENTIFICATION

You will need two parts to complete the connection, a plug and a coupler



To order a coupler/plug you will need to know **SHAPE**, **BODY SIZE**, **THREAD SIZE**, and **TYPE**

PROFILE: There are many different shapes, and they are not interchangeable, see below to chose

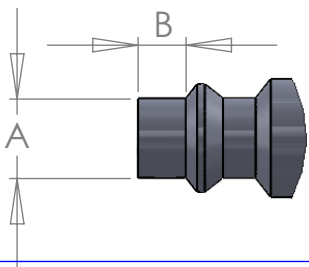
BODY SIZE: This is NOT thread size. Couplers come in 1/4, 3/8 and 1/2 body size
 the larger the body size the more air it will flow, body sizes do NOT interchange
 1/4 body size: 30 cfm flow rate, this is the most common size
 3/8 body size: 70 cfm flow rate, used for large impacts, truck shops, farm

THREAD SIZE: Couplers and plugs come in a variety of NPT thread sizes, male and female

TYPE: Couplers come as standard (hose comes out instantly when sleeve is pulled) or safety couplers (allows the air to bleed out of the hose before the hose can disconnect)

EXAMPLE ORDER: Standard or Safety coupler, industrial profile, 1/4 body size with 1/4" male npt threads

Plug, industrial profile, 1/4 body size with 1/4" female npt threads



DIMENSION	A	B
30 CFM 1/4 BODY	5/16"	3/16"
70CFM 3/8 BODY	7/16"	5/16"

Engineered Specialties **ONLY** sells the Industrial profile. It is the most common.
 Check the measurements for 1/4 body size or 3/8 body size

STANDARD COUPLER INDUSTRIAL STYLE	BODY SIZE	NPT THREAD	PLUG INDUSTRIAL	BODY SIZE	NPT THREAD	SAFETY COUPLER INDUSTRIAL STYLE	BODY SIZE	NPT THREAD
K6221	1/4	1/4" MALE	K5221	1/4	1/4" MALE	K7221	1/4	1/4" MALE
K6220	1/4	1/4" FEMALE	K5220	1/4	1/4" FEMALE	K7220	1/4	1/4" FEMALE
K6241	1/4	1/2" MALE				K7241	1/4	1/2" MALE
			K8221	3/8	1/4" MALE	K9231	3/8	3/8" MALE
			K8220	3/8	1/4" FEMALE	K9230	3/8	3/8" FEMALE
			K8231	3/8	3/8" MALE	K9241	3/8	1/2" MALE
			K8230	3/8	3/8" FEMALE	K9240	3/8	1/2" FEMALE
			K8241	3/8	1/2" MALE			
			K8240	3/8	1/2" FEMALE			

The same plug will work for both the standard coupler and safety coupler