

# COST OF NOT DETECTING

- Undetected leaks leading to water damage
- Increased risk of costly repairs
- Higher water bills due to inefficiencies
- Potential mold and mildew growth
- Home insurance claims denied due to water damage
- Inability to remotely monitor and control water usage
- Higher insurance premiums
- Non Renewals / risk of getting dropped from carrier.

**500K** GALLONS LOST DUE TO UNDETECTED LEAKS  
(US EPA)

# PHYN & MOEN FLO SYSTEMS

Our cutting-edge systems, Phyn and Moen Flo, are designed to revolutionize water management in homes, **providing real-time monitoring, leak detection, and peace of mind for homeowners.**



**flo**  
BY MOEN

**PHYN**



480-590-1285 ROC #333670

ROC #333670



**Ryerson**  
Plumbing, LLC

**SMART WATER**  
MANAGEMENT SOLUTIONS

**PHYN** | **flo**  
BY MOEN



SCHEDULE TODAY  
**480-590-1285**

# FUTURE-PROOF INVESTMENT

**INVEST IN THE LONG-TERM HEALTH AND EFFICIENCY OF YOUR HOME:**

- Water Conservation
- Smart Home Technology



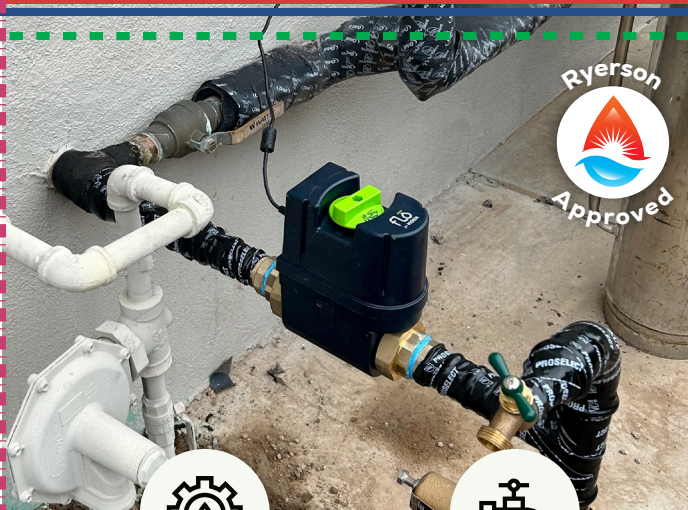
## POSSIBLE INSURANCE BENEFITS

Qualify for potential insurance benefits or discounts by investing in smart water management solutions.



## ENVIRONMENTAL RESPONSIBILITY

Contribute to water conservation efforts by optimizing water usage and minimizing waste.



## AUTOMATIC ALERTS OF WATER LEAKS

Receive immediate alerts of abnormal water usage, allowing you to take prompt action to prevent damage.



## HOMEOWNER CONTROL FROM PHONE

Control your water system from anywhere using your smartphone or a similar device.

# CUSTOMIZED SOLUTIONS

**EACH INSTALLATION IS TAILORED TO MEET YOUR UNIQUE NEEDS:**

- Different Pipe Diameters
- Installation Complexities



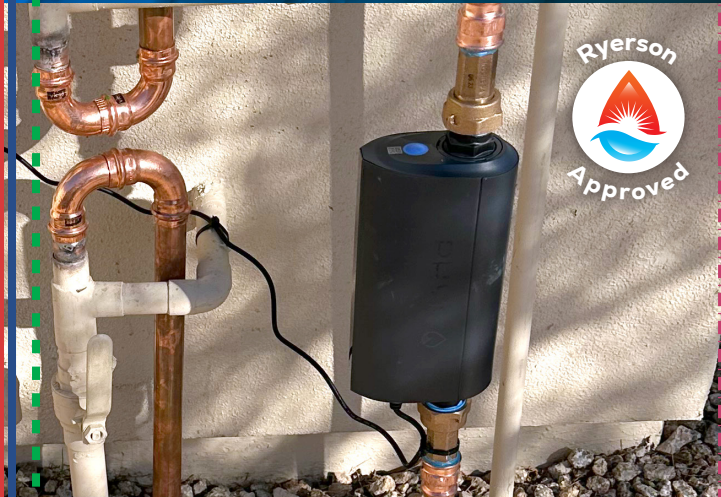
## REAL-TIME WATER MANAGEMENT

Monitor and manage your water usage in real-time, ensuring efficient consumption and early leak detection.



## AUTOMATIC LEAK DETECTION

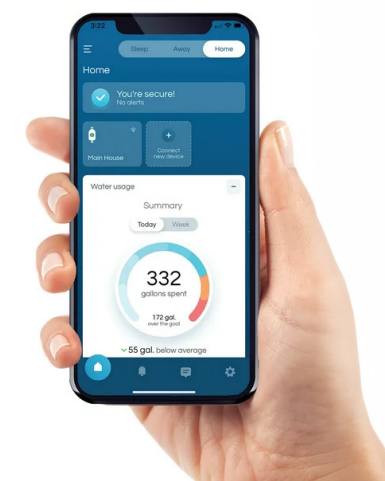
Our systems automatically detect leaks and shut down the water supply, preventing costly damage to your home.



# REQUIREMENTS

**TO INSTALL PHYN OR MOEN FLO, YOU'LL NEED:**

- Electrical Outlet Within 12 Feet
- 1.5 Inch or Smaller Pipe Diameter
- Smartphone or Similar Device
- Constant Wi-Fi Access (2.4 gigs required)



SCHEDULE TODAY **480-590-1285**

 **RyersonPlumbing, LLC**

**ROC #333670**