



AMSTERDAM BUILDING

112 North 3rd Street | Minneapolis, MN 55401

Office Space With Free Parking In the North Loop At the Historical Amsterdam Building!

The Historic Amsterdam Building was built in 1908 and is located in the heart of the North Loop within walking distance of several of the North Loop's best restaurants, coffee shops, and retail destinations. The building is completely updated while maintaining its charming character with its brick and timber construction. The Amsterdam building also houses one of the premier restaurants in the downtown area, the 112 Eatery. Each of the office floors features tall ceilings, lots of natural light, and an open layout. Suite 500 (Penthouse) comes with free parking and the potential for a rooftop deck with amazing views of downtown.

Highlights and Features:

- Brick and timber construction
- Plenty of natural light from many windows as well as skylights
- Tall ceilings
- Completely updated
- Private entrances to each floor
- Restrooms and kitchenettes on each floor
- Easy access to I-94, I-394 and points west via North 3rd Street, and I-35W via Washington Avenue
- Close to sports arenas, entertainment venues, shopping and restaurants
- Walking distance from Mississippi River Parkways and park areas

Space Available:

- Suite 300: 2,000 sf (3rd floor)
- Suite 400: 2,000 sf (4th floor)
- Suite 500: 2,000 sf (5th floor)
- Suites 300, 400 and 500: 6,000 sf contiguous

Lease Rates:

- Suite 300: \$3,000 gross per month plus electricity
- Suite 400: \$3,000 gross per month plus electricity
- Suite 500 (Penthouse): \$3,500 gross per month plus electricity



Christianson & Company
COMMERCIAL REAL ESTATE SERVICES

www.SpaceAvailableMN.com

SABINE SHEA

612.203.5946

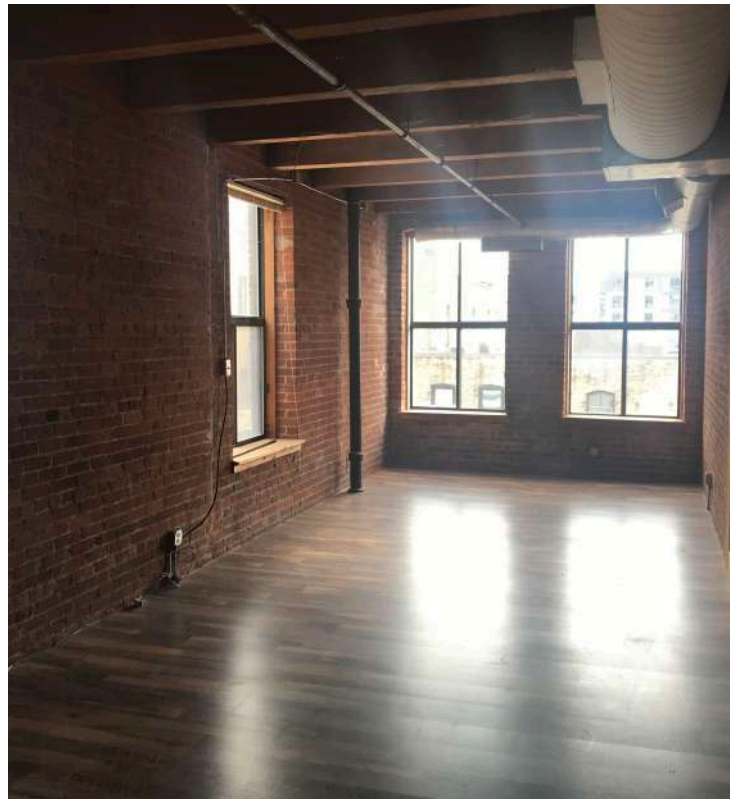
sabine@christiansonandco.com

This information is accurate as of the date of printing and is subject to change without notice. All information is deemed accurate, but cannot be guaranteed.

Space Available:

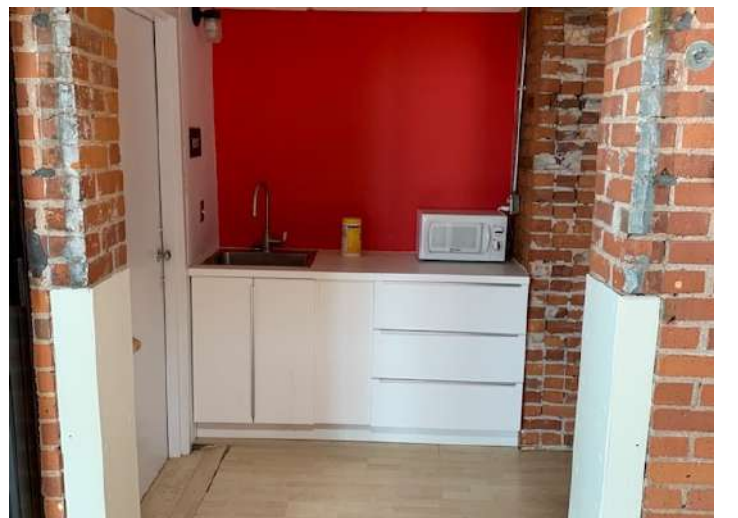
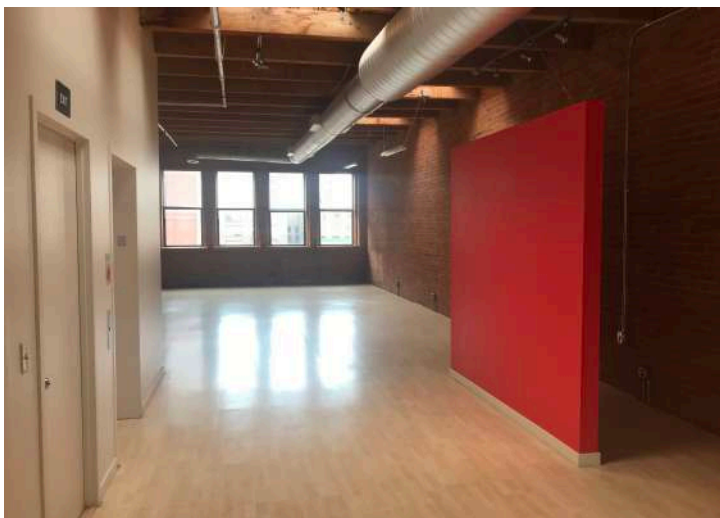
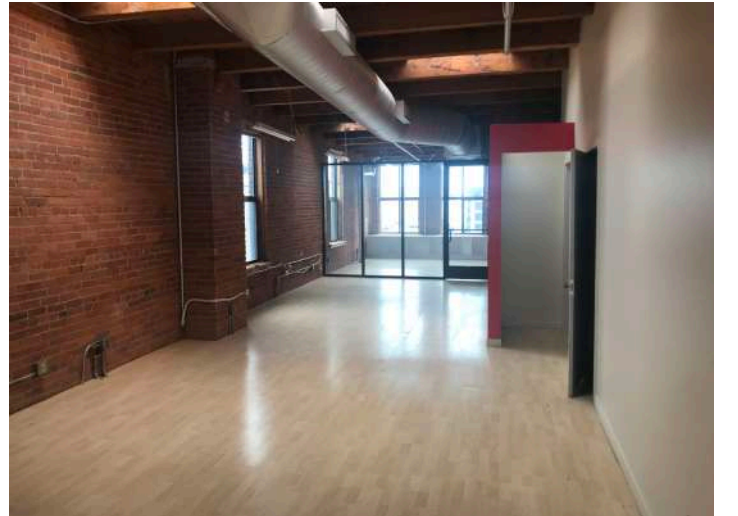
www.SpaceAvailableMN.com

3rd Floor Interior Photos



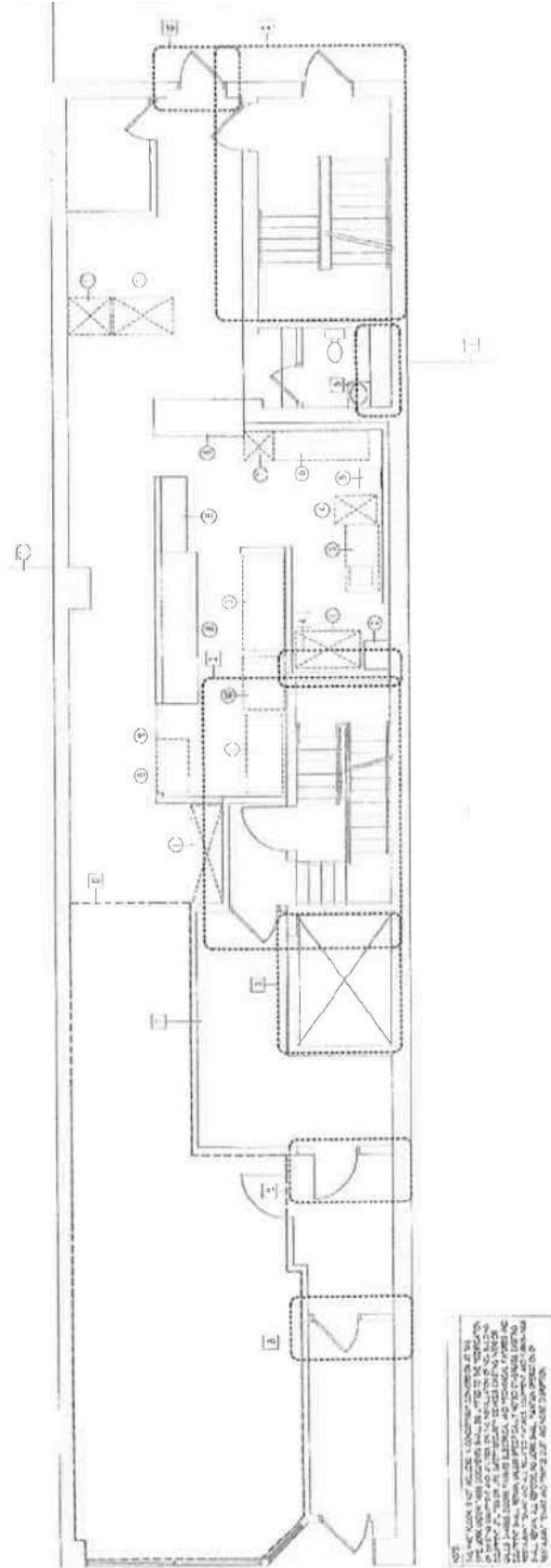
This information is accurate as of the date of printing and is subject to change without notice. All information is deemed accurate, but cannot be guaranteed.

5th Floor Interior Photos

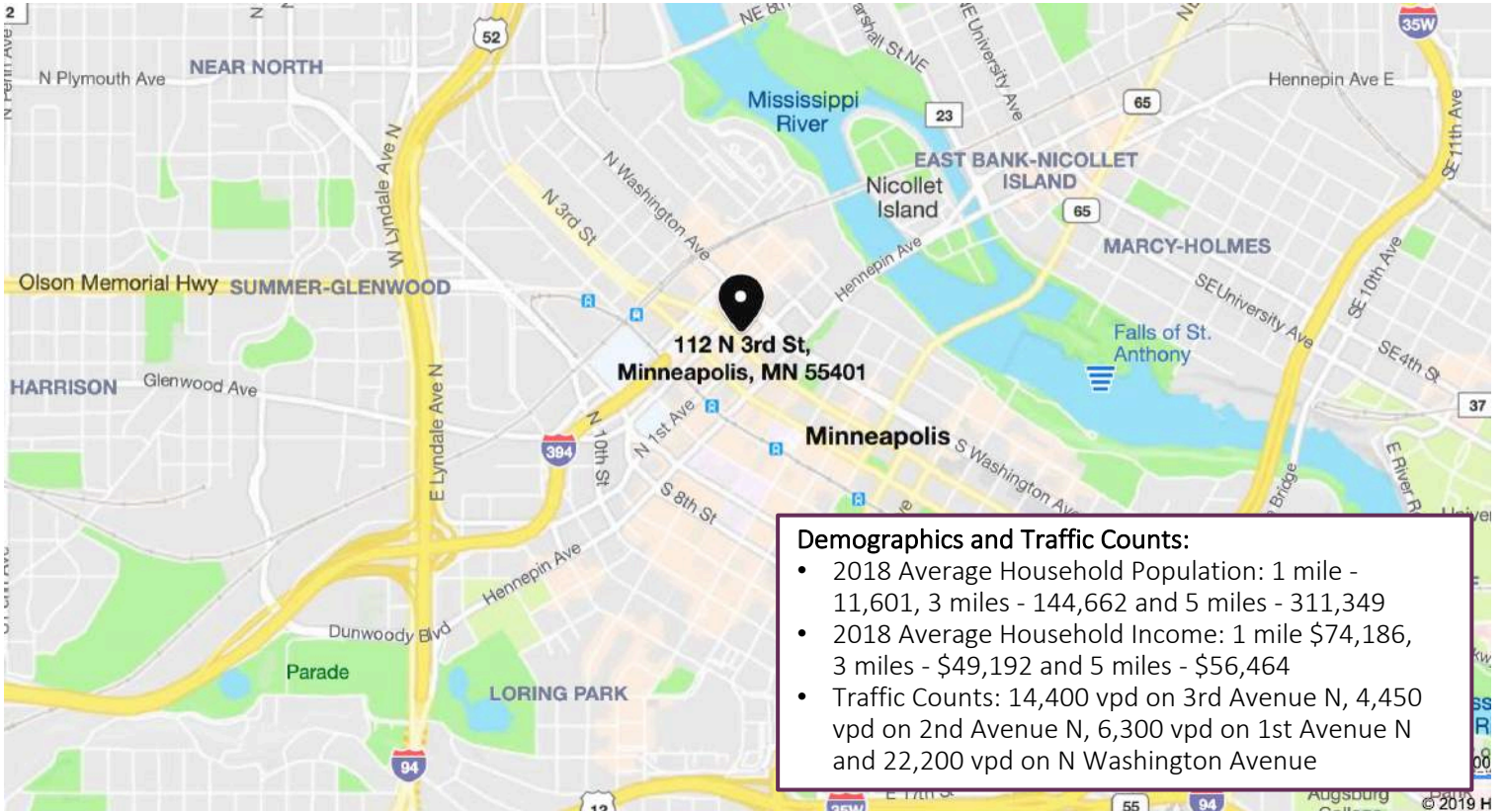


This information is accurate as of the date of printing and is subject to change without notice. All information is deemed accurate, but cannot be guaranteed.

Space Plan – Suites 300, 400 and 500



Map



Aerial



This information is accurate as of the date of printing and is subject to change without notice. All information is deemed accurate, but cannot be guaranteed.