



Minneapolis, MN 55408

Turnkey Restaurant Space For Lease On The Corner Of Lyndale Avenue and Lake Street

Highlights and Features:

- Turnkey restaurant and bar
- High visibility on the corner of Lyndale & Lake
- Beautiful restaurant space with 2 full commercial kitchens (1 on main level, 1 on lower level)
- Large, private, enclosed outdoor patio with fountain
- Convenient public and metered parking nearby
- 1 full bar plus 1 smaller outdoor bar
- Capacity on main floor: 168
- Capacity on outdoor patio: 130
- Can be divided into separate bar and restaurant area
- 2 ADA bathrooms on main level plus staff bathroom, conference room plus additional storage on lower level
- Area tenants include Jungle Theater, Lyn Lake Chiropractor, Tweak the Glam Studio, The Iron Door Pub, Volstead's Emporium, Toppers, Lynlake Brewery, Anytime Fitness and more

Space Available:

- 6,972 sf (plus 2,500 sf outdoor patio free of charge)
- 2022 CAM/Tax: \$5.00 psf
- Lease Rate: \$20.00 psf NNN



Christianson & Company
COMMERCIAL REAL ESTATE SERVICES
www.SpaceAvailableMN.com

CORFAC
INTERNATIONAL

SABINE SHEA

612.203.5946

sabine@christiansonandco.com

This information is accurate as of the date of printing and is subject to change without notice. All information is deemed accurate, but cannot be guaranteed.

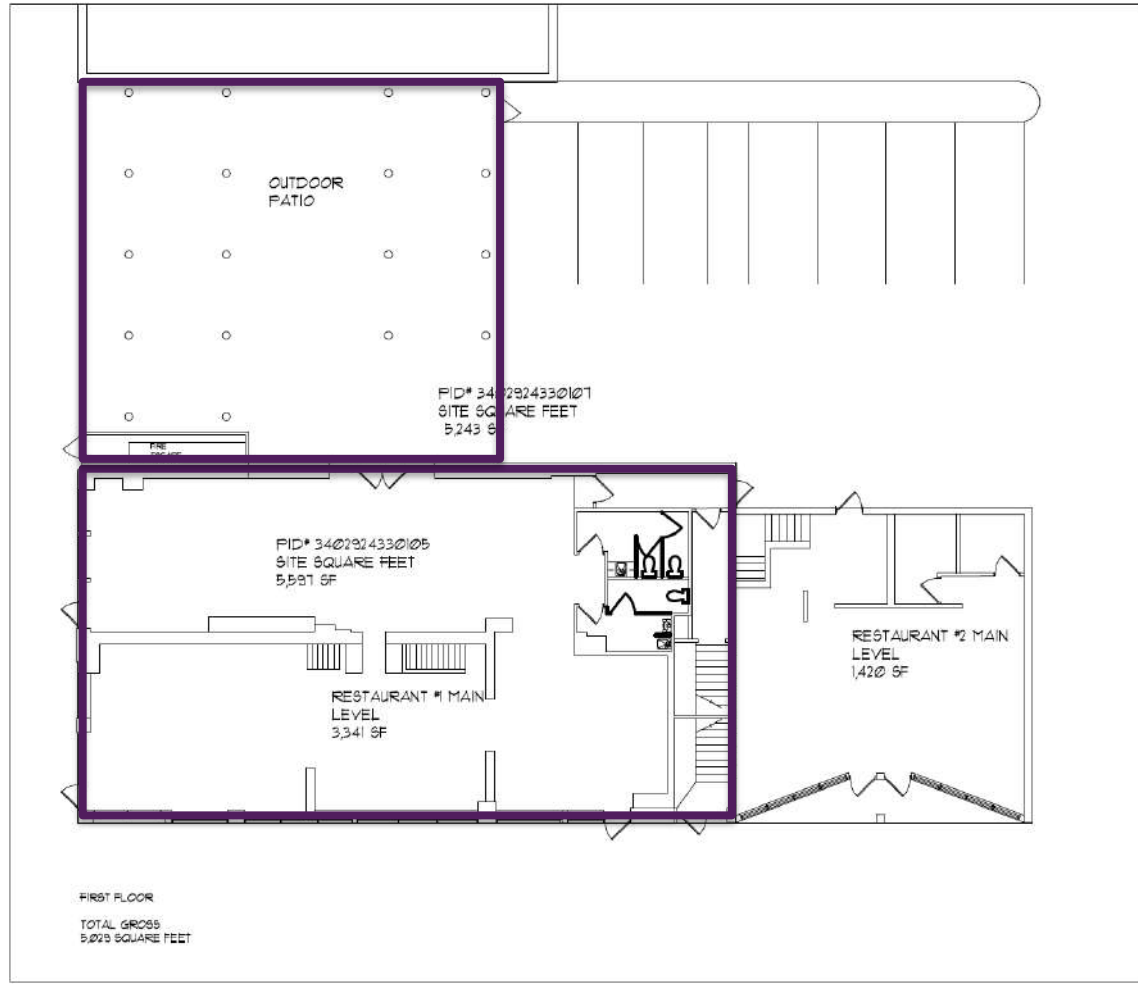
www.SpaceAvailableMN.com
info@SpaceAvailableMN.com | 952.921.5844

Photos

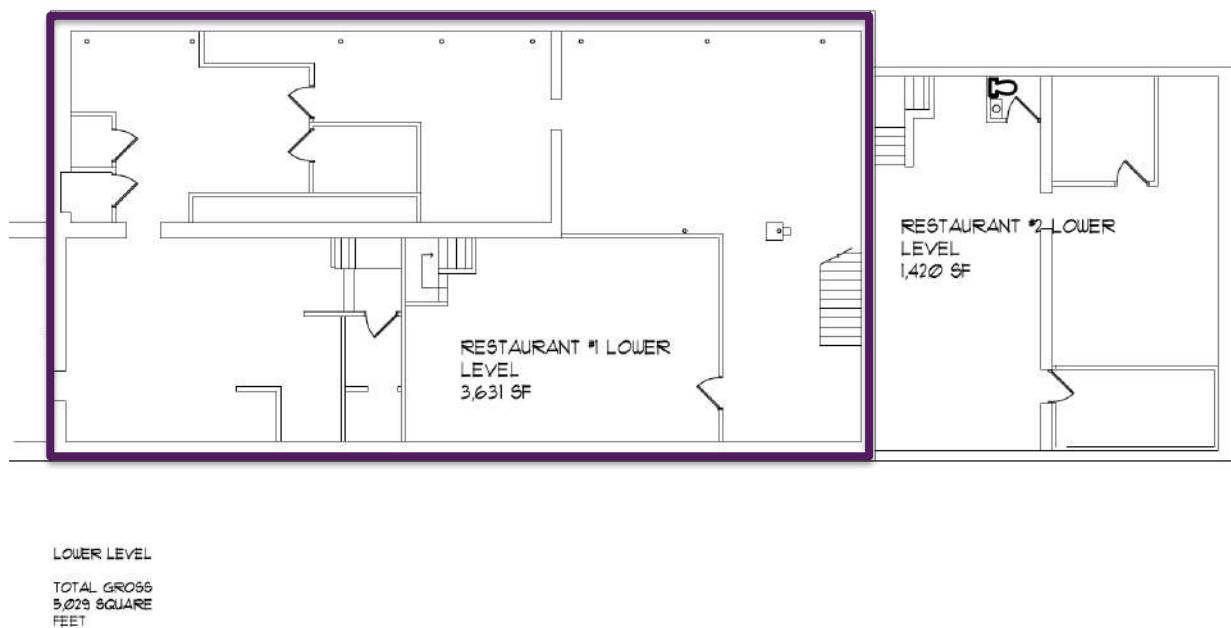


This information is accurate as of the date of printing and is subject to change without notice. All information is deemed accurate, but cannot be guaranteed.

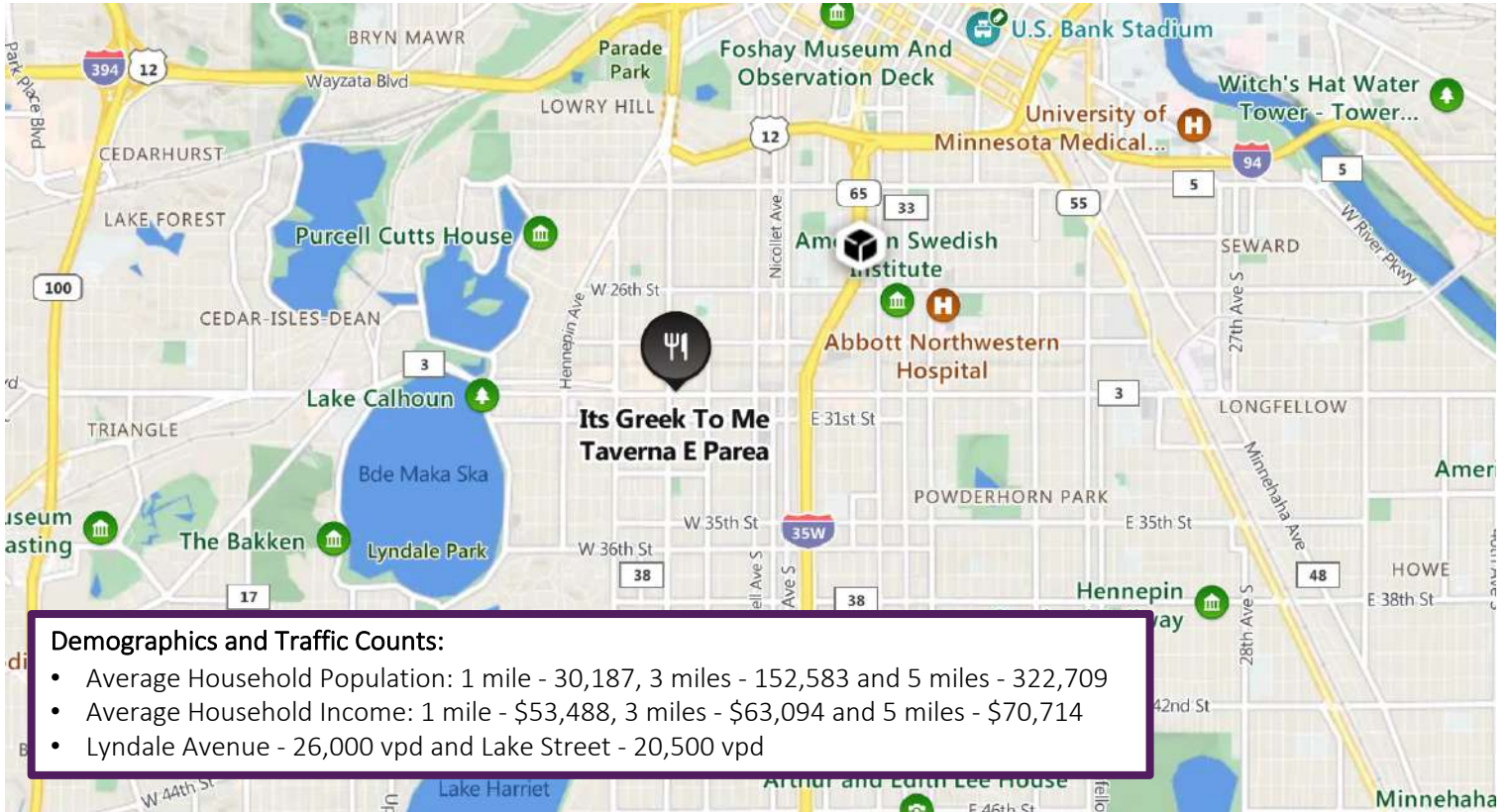
Floor Plan - Main Level



Floor Plan - Lower Level



Map



Aerial



This information is accurate as of the date of printing and is subject to change without notice. All information is deemed accurate, but cannot be guaranteed.