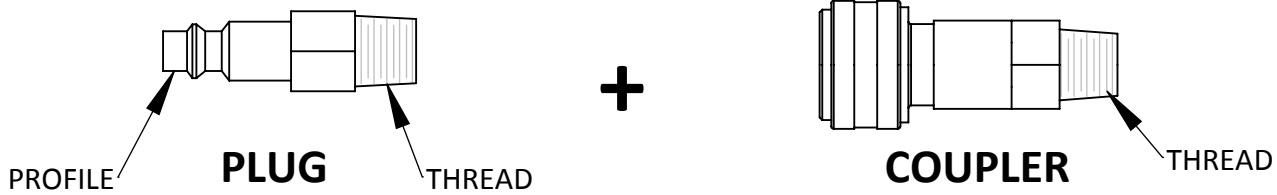


QUICK COUPLER IDENTIFICATION

You will need two parts to complete the connection, a plug and a coupler



To order a coupler/plug you will need to know **SHAPE**, **BODY SIZE**, **THREAD SIZE**, and **TYPE**

PROFILE: There are many different shapes, and they are not interchangeable, see below to chose

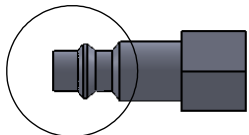
BODY SIZE: This is NOT thread size. Couplers come in 1/4, 3/8 and 1/2 body size
 the larger the body size the more air it will flow, body sizes do NOT interchange
 1/4 body size: 30 cfm flow rate, this is the most common size
 3/8 body size: 70 cfm flow rate, used for large impacts, truck shops, farm

THREAD SIZE: Couplers and plugs come in a variety of NPT thread sizes, male and female

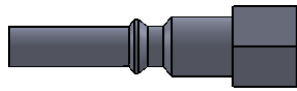
TYPE: Couplers come as standard (hose comes out instantly when sleeve is pulled) or safety couplers (allows the air to bleed out of the hose before the hose can disconnect)

EXAMPLE ORDER: Standard or Safety coupler, industrial profile, 1/4 body size with 1/4" male npt threads

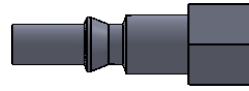
Plug, industrial profile, 1/4 body size with 1/4" female npt threads



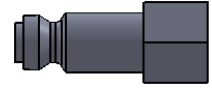
INDUSTRIAL (MILTON M)



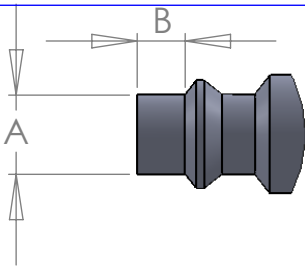
LINCOLN



ARO



TRUFLATE (AUTOMOTIVE)



| DIMENSION | A | B |
|-----------|-------|-------|
| 1/4 BODY | 5/16" | 3/16" |
| 3/8 BODY | 7/16" | 5/16" |

Engineered Specialties **ONLY** sells the Industrial profile. It is the most common. Check the measurements for 1/4 body size or 3/8 body size

| STANDARD COUPLER INDUSTRIAL STYLE | BODY SIZE | NPT THREAD |
|-----------------------------------|-----------|-------------|
| K6221 | 1/4 | 1/4" MALE |
| K6220 | 1/4 | 1/4" FEMALE |
| K6241 | 1/4 | 1/2" MALE |
| C-3FM3 | 3/8 | 3/8" MALE |
| C-3FF3 | 3/8 | 3/8" FEMALE |
| C-3FM4 | 3/8 | 1/2" MALE |
| C-3FF4 | 3/8 | 1/2" FEMALE |

| PLUG INDUSTRIAL | BODY SIZE | NPT THREAD |
|-----------------|-----------|-------------|
| K5221 | 1/4 | 1/4" MALE |
| K5220 | 1/4 | 1/4" FEMALE |
| C-D3M2 | 3/8 | 1/4" MALE |
| C-D3F2 | 3/8 | 1/4" FEMALE |
| C-D3M3 | 3/8 | 3/8" MALE |
| C-D3F3 | 3/8 | 3/8" FEMALE |
| C-D3M4 | 3/8 | 1/2" MALE |
| C-D3F4 | 3/8 | 1/2" FEMALE |

| SAFETY COUPLER INDUSTRIAL STYLE | BODY SIZE | NPT THREAD |
|---------------------------------|-----------|-------------|
| P-ISI-061251 | 1/4 | 1/4" MALE |
| P-ISI-061201 | 1/4 | 1/4" FEMALE |
| P-ISI-061253 | 1/4 | 1/2" MALE |
| P-ISI-081252 | 3/8 | 3/8" MALE |
| P-ISI-081202 | 3/8 | 3/8" FEMALE |
| P-ISI-081253 | 3/8 | 1/2" MALE |
| P-ISI-081203 | 3/8 | 1/2" FEMALE |

The same plug will work for both the standard coupler and safety coupler